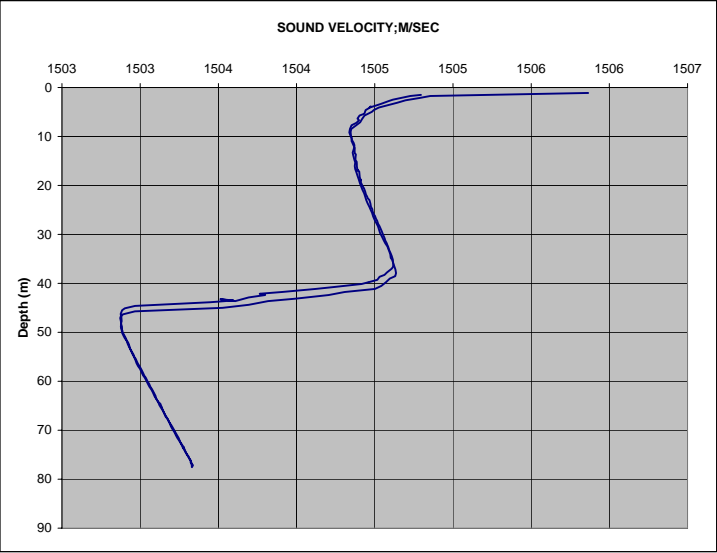


TS Profile #3

Location	40°32.7'S 146°31.3'E
Model Name	MIDAS SVP 5000DB
Serial No.	22249
Sample Mode	TRIP
Sample Interval	61
Sample Rate	2
Sample Period	1
Tare Setting	7.25
Tare Time Stamp	20/10/05 10:26:37
Density	1028.13
Gravity	9.807
Time Stamp	28/10/05 12:40:25
External PSU Voltage	10

SOUND VELOCITY:M/SEC	PRESSURE:M	TARE TEMPERATURE:C
1505.865	1.119	14.608
1504.855	1.740	14.348
1504.789	2.113	14.206
1504.696	2.610	14.176
1504.644	3.107	14.152
1504.601	3.480	14.141
1504.527	4.101	14.109
1504.494	4.599	14.094
1504.482	4.971	14.085
1504.435	5.717	14.071
1504.418	6.463	14.062
1504.407	7.084	14.055
1504.381	7.706	14.045
1504.350	8.451	14.033
1504.346	9.073	14.025
1504.348	9.819	14.022
1504.354	10.688	14.020
1504.365	11.310	14.019
1504.370	11.807	14.019
1504.366	12.553	14.015
1504.359	13.298	14.010
1504.362	13.796	14.007
1504.370	14.790	14.004
1504.375	15.287	14.003
1504.372	16.033	14.000
1504.375	16.654	13.996
1504.382	17.275	13.995
1504.390	18.021	13.993
1504.398	18.767	13.991
1504.405	19.512	13.991
1504.412	20.134	13.989
1504.421	20.879	13.988
1504.432	21.625	13.988
1504.439	22.246	13.988
1504.446	22.992	13.986
1504.454	23.613	13.987
1504.465	24.359	13.984
1504.475	25.105	13.984
1504.483	25.602	13.984
1504.490	26.348	13.984
1504.500	27.093	13.982
1504.508	27.590	13.982
1504.520	28.336	13.981
1504.527	28.957	13.981
1504.534	29.703	13.980
1504.546	30.449	13.980
1504.557	31.194	13.980
1504.568	31.816	13.979
1504.581	32.437	13.980
1504.589	33.183	13.978
1504.599	33.680	13.980
1504.608	34.425	13.978
1504.616	35.171	13.977
1504.617	35.792	13.976
1504.624	36.414	13.973
1504.632	37.159	13.970
1504.636	37.905	13.971
1504.631	38.526	13.967
1504.596	39.023	13.960
1504.572	39.769	13.948
1504.542	40.514	13.935
1504.501	41.136	13.917
1504.308	41.757	13.889
1504.205	42.378	13.836
1503.991	43.124	13.782
1503.818	43.621	13.724
1503.695	44.367	13.666
1503.527	44.988	13.626
1502.966	45.734	13.525
1502.889	46.355	13.414
1502.880	46.728	13.379
1502.882	47.722	13.372
1502.878	48.219	13.367
1502.884	48.840	13.363
1502.881	49.337	13.361
1502.885	50.083	13.358
1502.894	50.704	13.356

Average					
For Streamer depth			Full column (1.1m-77.5m)		
SV (m/s)	Depth (m)	Temp (C°)	SV (m/s)	Temp (C°)	
1504.359	7.945	14.034	1503.847	13.798	



1502.902	51.201	13.354
1502.913	51.698	13.355
1502.921	52.444	13.355
1502.931	53.065	13.353
1502.939	53.562	13.354
1502.949	54.308	13.353
1502.959	54.929	13.352
1502.969	55.550	13.352
1502.977	56.296	13.351
1502.987	56.917	13.353
1502.998	57.414	13.352
1503.007	58.035	13.352
1503.019	58.781	13.352
1503.030	59.278	13.352
1503.040	59.899	13.353
1503.049	60.521	13.352
1503.060	61.142	13.352
1503.071	61.639	13.352
1503.081	62.260	13.353
1503.091	63.006	13.353
1503.101	63.503	13.352
1503.114	64.124	13.354
1503.123	64.870	13.353
1503.132	65.367	13.354
1503.142	65.864	13.354
1503.153	66.485	13.354
1503.163	67.230	13.354
1503.175	67.727	13.354
1503.187	68.473	13.355
1503.197	69.218	13.353
1503.208	69.840	13.353
1503.220	70.461	13.354
1503.229	71.082	13.354
1503.238	71.579	13.354
1503.251	72.200	13.353
1503.261	72.697	13.352
1503.271	73.443	13.354
1503.283	74.064	13.355
1503.292	74.561	13.354
1503.301	75.058	13.356
1503.312	75.679	13.354
1503.324	76.176	13.355
1503.330	76.922	13.355
1503.331	77.543	13.355
1503.338	77.170	13.356
1503.328	76.798	13.357
1503.322	76.549	13.357
1503.327	76.798	13.355
1503.325	76.425	13.355
1503.315	75.804	13.356
1503.308	75.307	13.355
1503.302	75.058	13.355
1503.293	74.561	13.356
1503.283	73.816	13.354
1503.279	73.443	13.355
1503.278	73.691	13.354
1503.275	73.319	13.355
1503.262	72.697	13.355
1503.261	72.573	13.354
1503.261	72.697	13.354
1503.255	72.325	13.354
1503.246	71.579	13.354
1503.232	70.834	13.353
1503.223	70.337	13.354
1503.217	69.964	13.353
1503.204	69.218	13.354
1503.197	68.846	13.353
1503.185	68.349	13.353
1503.176	67.727	13.353
1503.174	67.603	13.352
1503.160	66.858	13.353
1503.154	66.485	13.352
1503.144	65.864	13.352
1503.138	65.367	13.352
1503.129	64.621	13.352
1503.113	64.124	13.352
1503.101	63.378	13.353
1503.098	63.006	13.352
1503.086	62.260	13.352
1503.076	61.639	13.351
1503.066	61.142	13.351
1503.058	60.521	13.350
1503.047	60.024	13.351
1503.036	59.278	13.352
1503.027	58.905	13.351
1503.017	58.160	13.351
1503.008	57.663	13.350
1502.996	56.917	13.351
1502.988	56.544	13.351
1502.982	56.172	13.350
1502.972	55.426	13.351
1502.963	55.053	13.350

1502.957	54.556	13.350
1502.946	53.935	13.350
1502.937	53.438	13.350
1502.935	53.199	13.350
1502.928	52.444	13.350
1502.922	52.071	13.352
1502.914	51.698	13.352
1502.908	51.201	13.352
1502.900	50.704	13.353
1502.888	49.959	13.354
1502.887	49.710	13.353
1502.876	48.840	13.353
1502.879	48.219	13.357
1502.876	47.722	13.359
1502.872	47.100	13.361
1502.877	46.603	13.364
1502.875	46.231	13.367
1502.885	45.485	13.372
1502.902	45.112	13.376
1502.968	44.615	13.388
1503.447	43.870	13.494
1503.597	43.497	13.580
1503.513	43.248	13.579
1503.608	43.621	13.592
1503.694	42.875	13.617
1503.799	42.378	13.651
1503.764	42.130	13.654
1503.907	41.757	13.681
1504.120	41.136	13.740
1504.238	40.763	13.791
1504.416	40.142	13.857
1504.460	39.769	13.877
1504.516	39.272	13.908
1504.531	38.650	13.917
1504.562	38.278	13.927
1504.578	37.781	13.940
1504.607	37.035	13.951
1504.617	36.662	13.960
1504.619	36.165	13.965
1504.618	35.792	13.967
1504.610	35.171	13.968
1504.602	34.798	13.969
1504.599	34.052	13.969
1504.595	33.680	13.970
1504.593	33.307	13.971
1504.586	32.561	13.972
1504.561	32.188	13.973
1504.577	31.816	13.974
1504.567	31.194	13.975
1504.563	30.821	13.975
1504.553	30.076	13.976
1504.544	29.330	13.977
1504.531	28.336	13.977
1504.521	27.839	13.978
1504.515	27.217	13.977
1504.508	26.845	13.978
1504.501	26.223	13.978
1504.493	25.850	13.980
1504.486	25.229	13.979
1504.485	24.856	13.980
1504.475	24.359	13.981
1504.472	23.738	13.983
1504.466	22.992	13.983
1504.455	22.619	13.984
1504.451	22.246	13.984
1504.444	21.874	13.983
1504.439	21.252	13.984
1504.431	20.631	13.984
1504.422	20.134	13.985
1504.418	19.885	13.984
1504.411	19.388	13.987
1504.409	18.767	13.986
1504.410	19.015	13.987
1504.408	18.767	13.987
1504.404	18.270	13.988
1504.401	17.151	13.991
1504.386	16.778	13.991
1504.394	17.027	13.992
1504.388	16.654	13.992
1504.385	16.033	13.993
1504.385	15.660	13.994
1504.384	15.163	13.997
1504.376	14.790	13.998
1504.377	14.168	14.001
1504.379	13.671	14.003
1504.372	13.423	14.004
1504.371	12.926	14.005
1504.372	12.304	14.007
1504.364	11.807	14.009
1504.354	11.081	14.008
1504.352	10.937	14.010
1504.353	10.316	14.011

1504.344	9.819	14.012
1504.337	9.197	14.013
1504.341	8.451	14.017
1504.352	7.706	14.022
1504.382	7.209	14.031
1504.400	6.711	14.041
1504.390	6.339	14.045
1504.403	5.717	14.049
1504.433	5.344	14.054
1504.442	4.599	14.064
1504.463	4.226	14.068
1504.474	3.853	14.077
1504.467	4.101	14.078
1504.491	3.853	14.080
1504.538	3.356	14.093
1504.591	2.734	14.115
1504.616	2.486	14.128
1504.727	1.740	14.149
1504.796	1.491	14.168